

# GREEN POD GRADE 6

**Spring 2016**

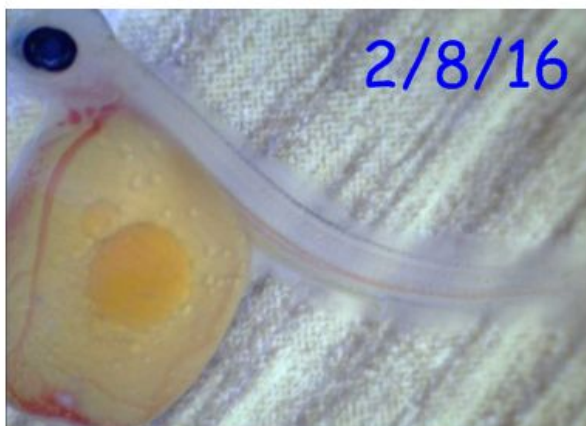
# WHERE WE'VE BEEN IN SCIENCE...

- Ecology
  - Difference between living and nonliving
  - Parts of an ecosystem
  - Energy in the ecosystem
    - energy roles, food webs
  - Human impacts on the ecosystem
    - “Show Me the Green” project

# WHERE WE ARE GOING IN SCIENCE...

- Ecology
  - Interactions
    - Predator/Prey
    - Symbiosis
  - Adaptations
- Watershed
  - Focus on Long Island Sound Watershed
- Weather
  - Three main weather factors (heat, air, water)
  - Local and Global weather factors

# SALMON



# SALMON RELEASE FIELD TRIP

- Thursday, May 5th
  - Salmon River in Colchester
  - 9:00am - 12:15pm
- Please consider volunteering to chaperone.





# WORLD CULTURES AND GEOGRAPHY

## MINI-UNIT:

## REGIONS OF STUDY:

Culture

~~Western Europe~~

Social Sciences

~~Middle East~~

Geography

**China and its  
Neighbors**

West and Central  
Africa



## CHINA AND ITS NEIGHBORS

- Map and physical features
- Ancient Dynasties of China
- Film: *The Last Emperor*
- Impacts of Communism
- Command vs Market Economy
- Culture Learning Stations
- Buddhism
- Current Events
- Read Aloud: *Where the Mountain Meets the Moon*

# WHERE WE'VE BEEN IN LANGUAGE ARTS...

- Monthly reading “page goals” (due today)
- Practiced generating claims(main idea) and supporting with evidence(examples/details)
  - \* Argumentative theme essay
  - \* Teen activist essay



# WHERE WE ARE NOW

## **Informational books writing skills**

- \* Generating claims
- \* Supporting those two claims with evidence from research

## **How can I help my child with his or her writing?**

- \* Read aloud for sentence fluency and typing errors
- \* Check for evidence in each body paragraph
- \* Ask, “Did you explain how each piece of evidence supports your claim?”

MATHEMATICS 3-30-16

Completed curriculum: Math in Focus book

Blue and Green Math (Accelerated Math):

Completed chapter six (Percents) and chapter seven (simplifying expressions) units.

Red and Yellow Math(Grade Level Math):

Completed chapter five (Rate/Unit Rate). We just finished chapter six unit on percents.They are taking a test tomorrow.

NEXT UNITS : BOOK B

### **Chapter 8 Equations and Inequalities:**

We are covering section 8-1 Solving algebraic equations and 8-4 Word Problems (part that covers solving equations). Seventh grade will cover the inequalities.

### **Chapter 10 Area of Polygons- all sections**

**Chapters 13 and 14: Introduction to statistics and Measure of Central Tendencies (Mean, Median and Mode).**

# ONLINE TEXTBOOK

Students have access to online textbook.

My Hrw.com

They already have the password.

Students have access to practice problems, enrichment problems and re-teach problems.

# ASSESSMENTS

## Homework Quiz:


Questions come directly from completed, corrected homework. No Retakes on this.

Students are advised to come for extra help. This is a nice way to develop that self-advocacy skill.

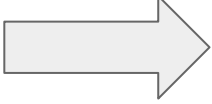
## End of the unit test and quizzes:

Students are allowed to retake the assessment after the reflection and extra help session.

# PLACEMENTS FOR 7TH GRADE


6  7

The majority of students will stay in their current level in 7th grade.

6+  7+

The 7 and 7+ courses have the same content. In addition to Math 7 content, 7+ will complete essential Math 8 curricula in preparation for a study of Algebra 1 in grade 8. Pacing and level of complexity are the major differences.

# PLACEMENTS FOR 7TH GRADE

6  7+

A few students may be recommended to move up a level.

6+  Algebra 1+

If your child was not recommended to move up a level, you will need to complete the waiver process. A full description of this process will be presented at the upcoming Math Informational Sessions on April 12th.

# MATH INFORMATIONAL SESSIONS

April 12th

The location is BMS Auditorium at 1:30PM and 7:00PM (same information will be shared at each session).

Direct questions regarding recommendation process and course progression to the 6-12 Math Coordinator

Andrew Hill 203-341-1471 [ahill@westport.k12.ct.us](mailto:ahill@westport.k12.ct.us)